

MR6000, MR6000-01 - How to Update the Firmware

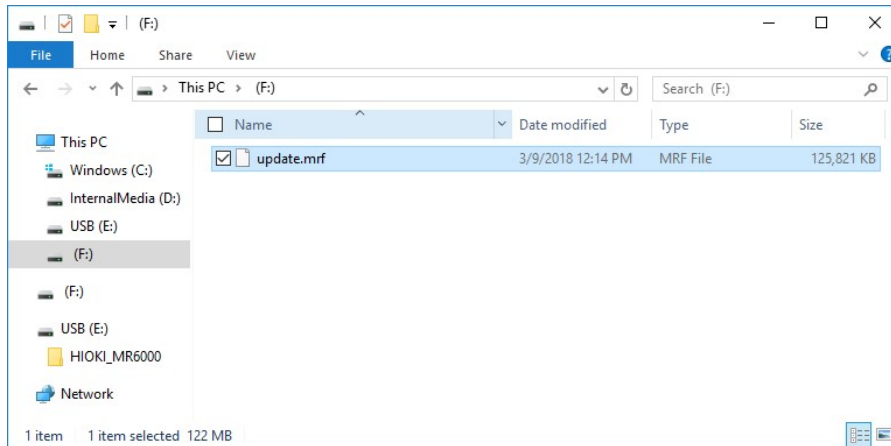
■ Preparing for the Version Update

1. USB flash drive

Required to store the version update file and load into the MR6000

2. Save the Version Update file “update.mrf” into the USB flash drive’s root directory (the root directory is the USB flash drive’s top directory)

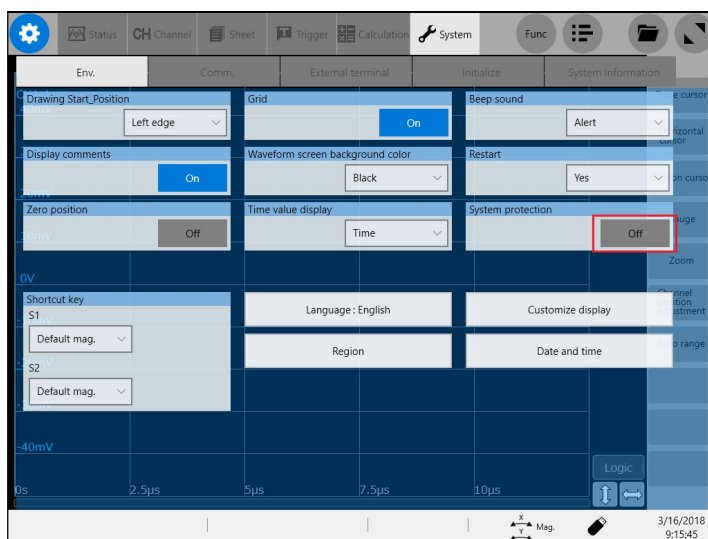
(See example below: “update.mrf” is being saved into the F drive’s root directory)



3. After the version update, all settings on the MR6000 will return to the default condition. Please save any necessary settings in a USB flash drive prior to conducting the update.

4. Version update will not proceed if the System Protection function is turned ON.

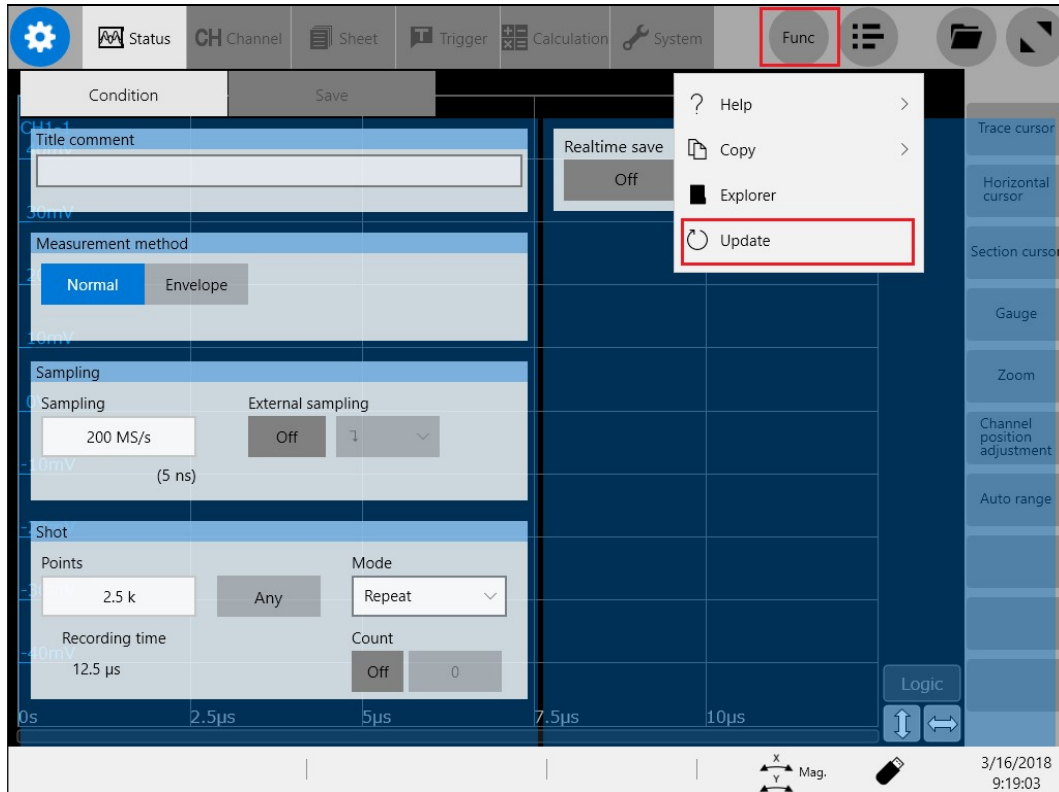
Check the System Environment settings and turn this function OFF if necessary.



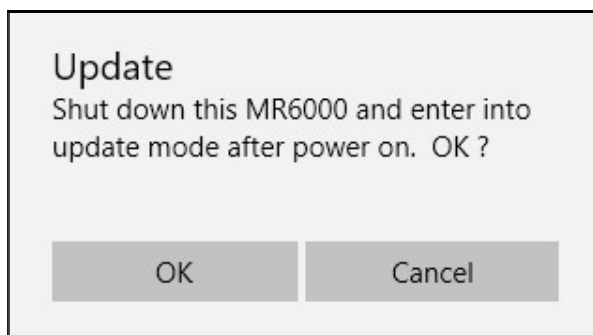
5. All of the required preparations have been made. Please proceed to the next step, “How to Update the Firmware” .

■ How to Update the Firmware

1. Insert the USB flash drive saved with the version update file into any of the MR6000's USB slots. Do not connect any device other than this USB flash drive into the USB slot.
2. In the Settings screen, select Update under the Function button.

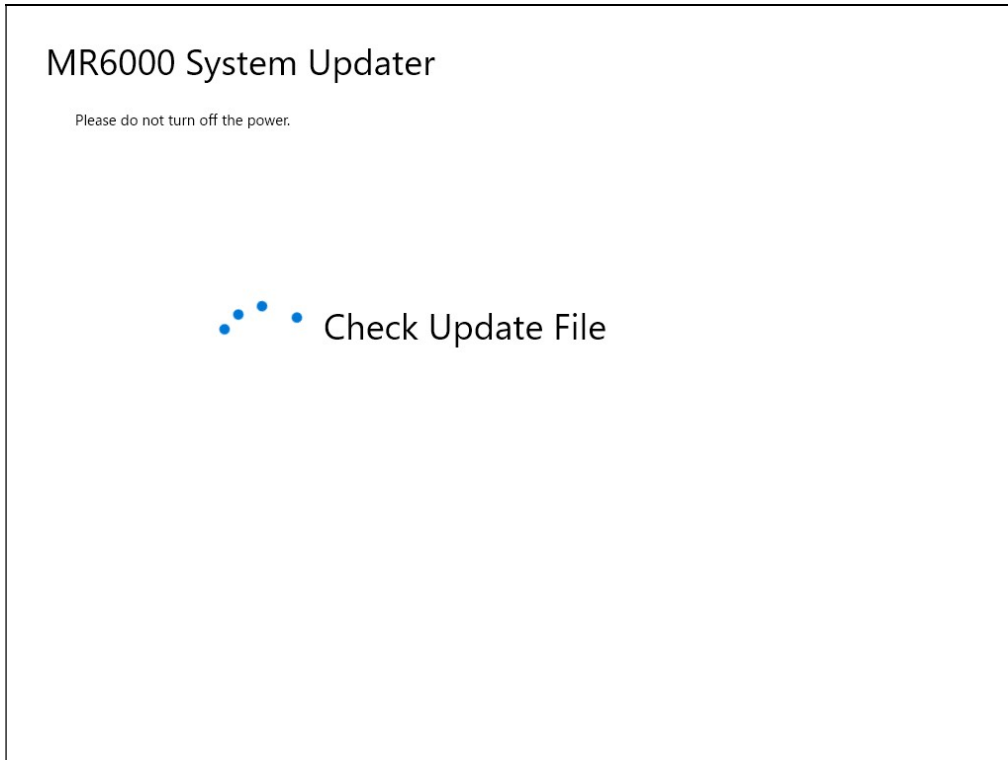


3. A confirmation window will appear. Click OK to begin the update.
After starting the update, the power of the MR6000 is automatically turned off when the preparation for the update is completed.
Next time the power is turned on, the version of the MR6000 software will be updated.
The process will take approximately 5 minutes. If the FPGA update is included, 30 minutes will be added.

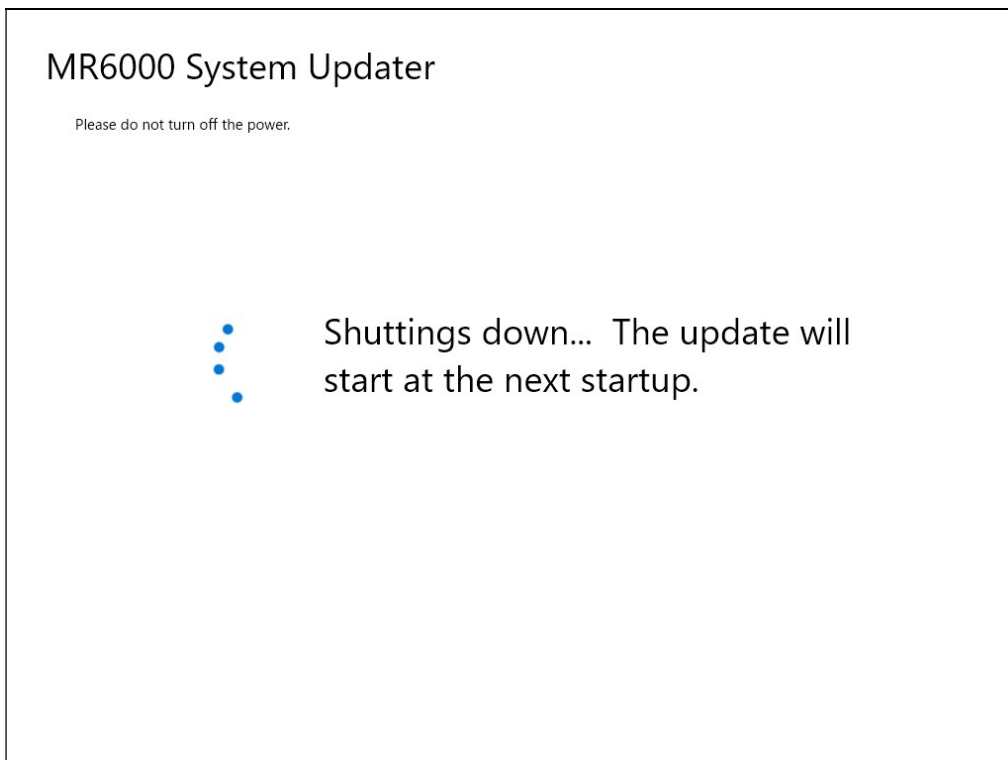


Warning: After starting the update, do not touch the MR6000 while it is running.

4. This is the screen for checking the system version and preparing for version update.



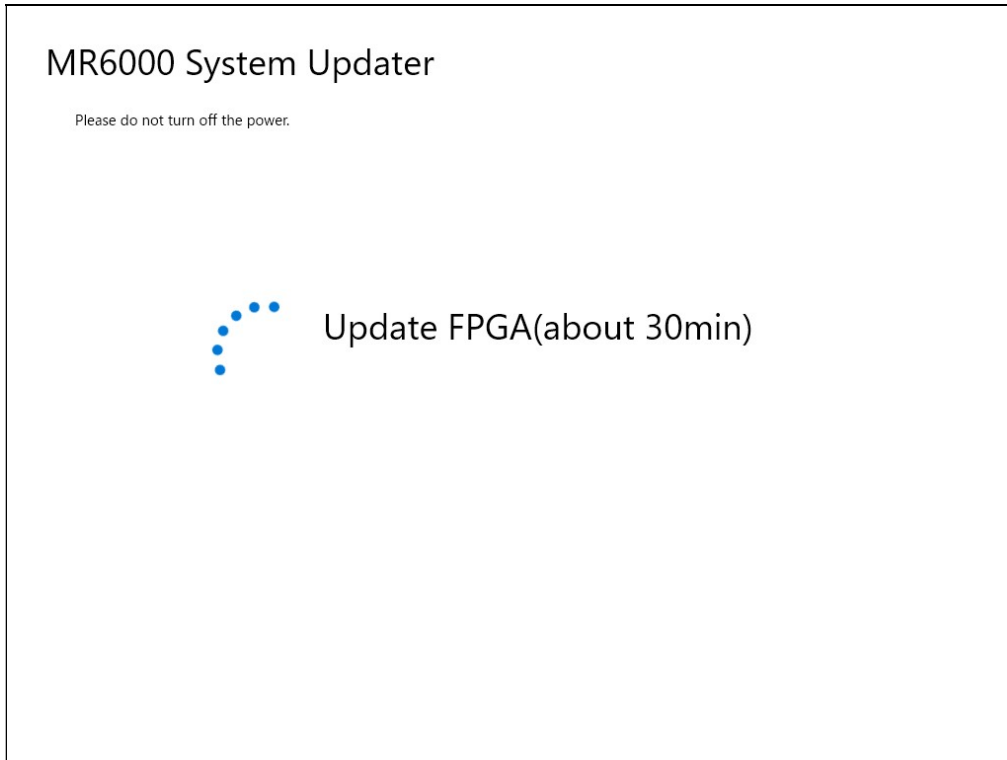
5. After this screen is displayed, it will automatically shut down.



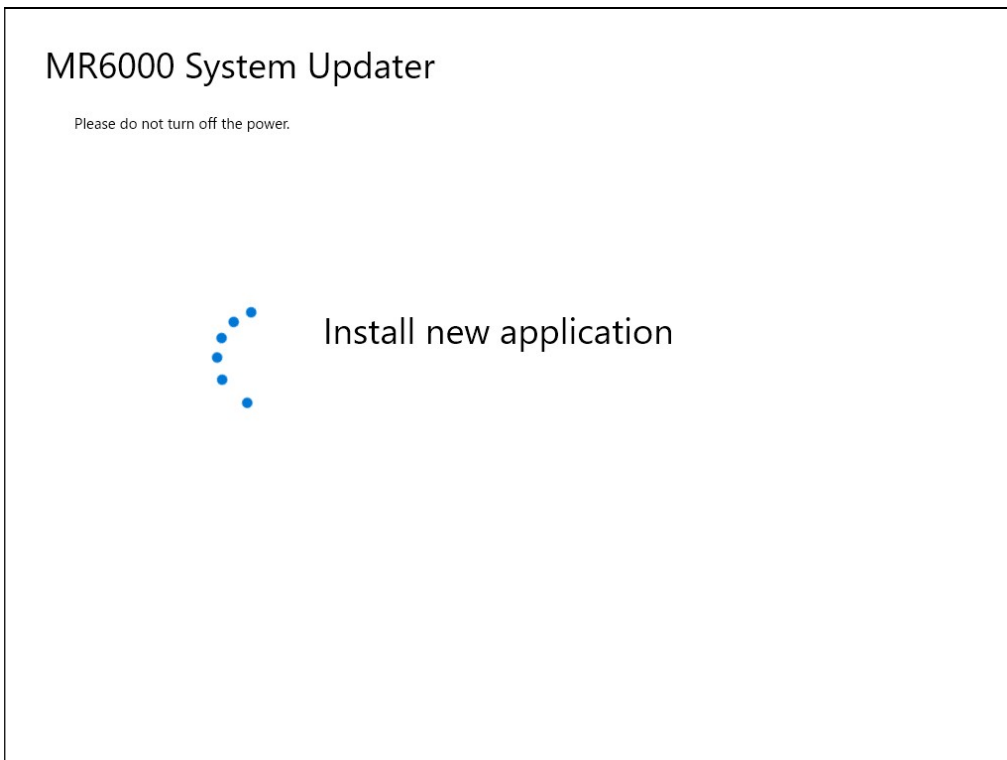
6. Press the power key. After starting, the version update will be executed automatically.

Warning: Do not turn off the power of MR6000 during the update. Also, do not touch the MR6000 until it is finished.

7. During the FPGA update, the screen will look like this: (Only when the FPGA update is included)



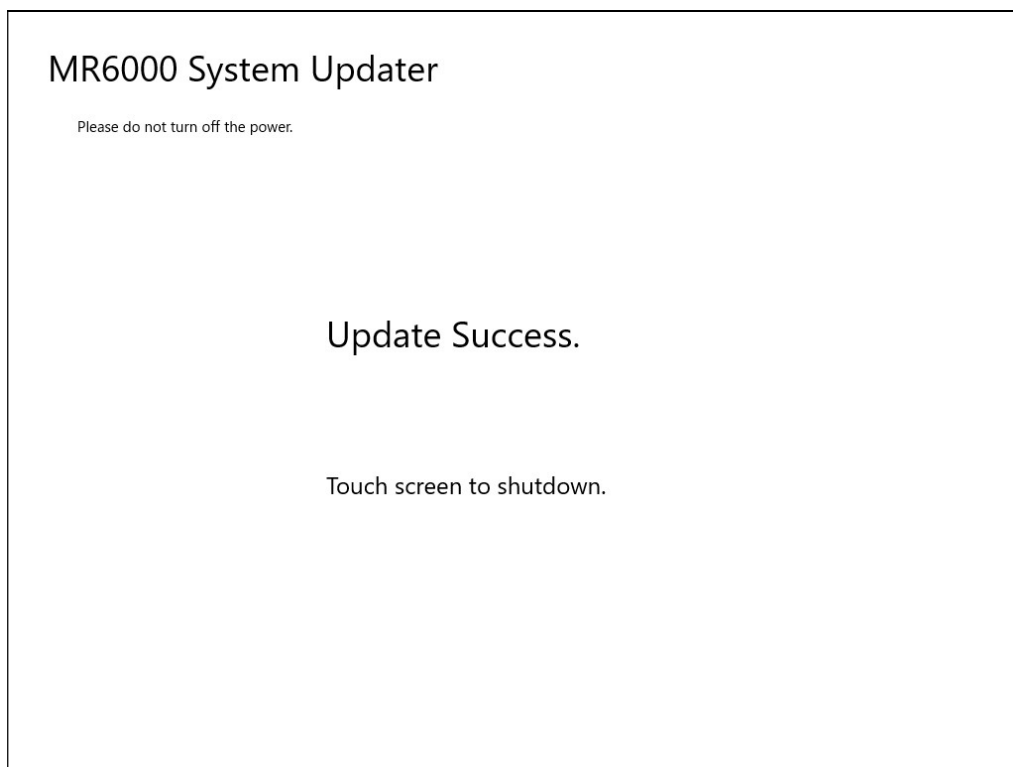
8. During the application update, the screen will look like this:



Warning: If the above screen (7. or 8.) remains displayed for 40 minutes or more, the version update may have failed.

In that case, proceed to "■ When the version update is not completed " (page 6).

9. Upon completion, you will see the following screen. Touch the screen to shut down the MR6000, and then restart the unit.



Version update is complete.

■ When the version update is not completed

If it does not end after 40 minutes have passed after starting the version upgrade, it is possible that the version upgrade has failed. Please proceed to the next step.

1. Insert the USB connectors of the keyboard and mouse into the any of the recorder' s USB slots. Press the Windows key and "D" key at the same time to display the desktop screen, then shut down from the start menu.

If you do not have a keyboard or mouse, press and hold the power button of MR6000 until the power turns off.

2. Turn on the power.

If the upgrade screen is displayed, wait until it finishes.

If the MR6000 screen is displayed, execute "■ How to Update the Firmware" again.



If the following screen is displayed, a dedicated program is required.

Please download the procedure manual and the version upgrade file from the link "If the version upgrade is not completed" link on the MR6000 firmware download page.

